

Your Personalized Land Rover

RANGE ROVER

NEW RANGE ROVER VELAR

Range Rover Velar R-Dynamic HSE 2.0 liter 4-cylinder 247HP Turbocharged Gas





EXTERIOR



EXTERIOR FEATURES

COLORS	Yulong White	\$610
WHEELS	21" 5 split-spoke 'Style 5047' with Diamond Turned finish	\$0
ROOF COLOR	Body-colored roof	
ROOF TYPE	Sliding panoramic roof	
ROOF RAILS	Silver painted roof rails	\$410
GLASS	Privacy Glass	
HEADLIGHTS	Premium LED headlights with signature DRL	

TOTAL \$1,020



COLORS



WHEELS



ROOF COLOR



ROOF TYPE



ROOF RAILS



GLASS

EXTERIOR

EXTERIOR FEATURES

R-Dynamic Exterior Package

- Includes:
- Hood and tailgate lettering and lower blade in Shadow Atlas
 - Door cladding lowers and sills, front, side and rear pinstripes, front and rear bumper lowers, lower finisher, tow eye cover in Narvik Black
 - Unique front bumper with air curtain finisher and mesh in Gloss Black and finisher inserts in burnished copper
 - Fender vent blade and hood vent in Burnished Copper
-

TOTAL \$0

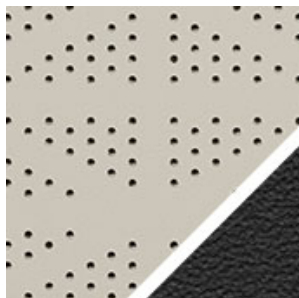
INTERIOR



INTERIOR FEATURES

TRIM	Light Oyster/Ebony perforated Windsor leather	\$0
SEAT FUNCTIONALITY	20-way driver/passenger seats with memory, massage with front heated/cooled seats and rear heated seats	\$510
INTERIOR UPGRADES	Extended Leather Upgrade	\$0
HEADLINING	Light Oyster Morzine headlining	\$0
FINISHERS	Shadow Aluminum trim finisher	\$0
MATERIAL	Leather steering wheel with Chrome bezel	
AUDIO	Meridian™ Surround Sound System (17 Speakers inc. subwoofer 825W)	\$0

TOTAL \$510



TRIM



HEADLINING



FINISHERS



MATERIAL



AUDIO

OPTIONS

TIRES AND SPARE WHEELS

\$410

Full size spare wheel

Full size spare wheel with vehicle jack, wheel brace and toolkit stored under loadspace floor.

\$410

*Full size spare wheel will match size and style of alloy wheels chosen. loadspace floor will be raised by approximately 100mm and maximum loadspace volume will be reduced. Not available with loadspace rails or illuminated metal loadspace scuff plate. Please contact your local Land Rover Retailer for more information.

INTERIOR FEATURES

\$255

Configurable Ambient Interior Lighting

New levels of ambient refinement and personalization have been reached with Configurable Ambient Interior Lighting. This feature allows you to vary the color and shade, changing the ambience of the cabin to suit your mood. There are ten colors in total, ranging from Ice White through to Moonlight and Racing Red.

\$255

OPTION PACKAGES

\$580

On/Off-Road Package

Terrain Response 2
All Terrain Progress Control (ATPC)
Configurable Dynamics

\$580

CONVENIENCE AND INFOTAINMENT

\$615

Sirius XM™ satellite radio and HD radio

-

\$615

TOWING

\$665

Tow Hitch Receiver

-

\$665

OPTIONS

10

Fixed rear recovery eye

-

\$0

TOTAL \$2,525

STANDARD FEATURES

EXTERIOR FEATURES

Auto-dimming, power fold, heated door mirrors with approach lights

Solar Attenuating Windshield

Powered gesture tailgate/trunk lid

TIRES AND SPARE WHEELS

Reduced section steel spare wheel

DRIVING AIDS

Adaptive Cruise Control with Queue Assist and Intelligent Emergency Braking

Park Assist

Rear View Camera

TRANSMISSION AND DYNAMICS

Trailer Stability Assist (TSA)

Autonomous Emergency Braking (AEB)

Speed Proportional Electronic Power Assisted Steering (EPAS)

Coil suspension

Open Rear Differential

Terrain Response

Single-speed transfer box (high range only)

8-speed Automatic Transmission

Adaptive Dynamics

Hill Launch Assist

Dynamic Stability Control (DSC)

Low Traction Launch

Electronic Traction Control (ETC)

Roll Stability Control (RSC)

Cornering Brake Control (CBC)

TRANSMISSION AND DYNAMICS

Torque Vectoring by Braking (TVBB)

Hill Descent Control (HDC)

Electric Parking Brake (EPB)

Anti-lock Braking System (ABS)

Electronic Brake-force Distribution (EBD)

EXTERIOR FEATURES AND FINISH

Acoustic laminated windshield

Heated rear window with timer

Rain sensing windshield wipers

R-Dynamic HSE badge

P250 badge

Unique front and rear bumper design

Burnished Copper Accents to Air Curtain Inserts, Hood vents, and Side vents

Shadow Atlas - Hood/Tailgate Lettering, Grille, Lower Blade

Narvik Black - Mirrors, Door Cladding, Pinstripe Finisher, Tow Eye Cover

Flush exterior door handles

Tailgate spoiler

HEADLIGHTS AND LIGHTING

Rear fog lights

Automatic headlight leveling system

Follow me home lighting

Automatic headlights

Front Fog Lights

WHEELS AND OPTIONS

Tire Pressure Monitoring System (TPMS)

All-season tires

INTERIOR FEATURES

Carpet mats

Power adjustable steering column

Satin Chrome Gearshift Paddles

INTERIOR FEATURES

Standard IP end caps

Touch Pro Second Display

Bright metal pedals

Auto-dimming interior rear view mirror

Illuminated vanity mirrors

Front and rear cupholders

Air Quality Sensor

Interior lighting

Metal front treadplates with R-Dynamic branding

Metal loadspace scuff plate

SEATING FUNCTIONALITY

40:20:40 split fold rear seat

Passive front headrests

Second row center headrest

CONVENIENCE AND INFOTAINMENT

Interactive Driver Display

Garage Door Opener (HomeLink®)

Navigation Pro

Pro Services

Bluetooth® connectivity

InControl Apps

Data Plan Pro

InControl Remote Smartphone App

Electrical Outlet Package 1

Loadspace cover

Lockable glovebox

Keyless Entry

Voice control

SAFETY

Blind Spot Assist

Perimetric alarm

Lane Keep Assist

Driver Condition Monitor

Reverse Traffic Detection

Traffic Sign Recognition and Adaptive Speed Limiter

Power operated child locks

Safety belt reminder

Rear LATCH

Global lock/unlock switch on driver door

Lock only switch on front passenger door

6 airbags

Advanced Emergency Brake Assist

Brake pad wear indicator

TECHNICAL SPECIFICATIONS

VEHICLE LENGTHS

Overall length (in)	189
Wheelbase (in)	112
Length behind first row (in)	70.6
Length behind second row (in)	40.7

VEHICLE HEIGHT & WIDTHS

Width with mirrors folded (in)	80
Width with mirrors out (in)	85
Front wheel track (in)	64.6
Rear wheel track (in)	65.2
Height (in)	65.5

STANDARD RIDE HEIGHT

With roof rails (in)	65
With roof antenna (in)	66.4
With panoramic roof open (in)	67.1
Access height air suspension setting will reduce each of the above by (in)	1.6

HEADROOM

Maximum front headroom with panoramic roof (in)	38.1
Rear headroom (in)	38

LEGROOM

Maximum front legroom (in)	40.3
Maximum rear legroom (in)	37.2

CARGO SPACE CAPACITY - REAR SEAT UPRIGHT

Height (in)	41.1
Width (in)	49
Cargo space volume (cu.ft.)	34.4
Cargo space width between arches (in)	41.3
Length at floor (in)	40.7

CARGO SPACE CAPACITY - REAR SEATS FORWARD

Height (in)	41.1
Width (in)	49

CARGO SPACE CAPACITY - REAR SEATS FORWARD

Cargo space volume (cu.ft.)	70
Cargo space width between arches (in)	63.6
Length at floor (in)	70.6

OFF-ROAD OBSTACLE CLEARANCE (ELECTRONIC AIR SUSPENSION)

Off-road height (in)	9.8
Approach Angle (R-Dynamic)	24.89° (27.15°)
Ramp Angle	23.5°
Departure Angle (R-Dynamic)	29.5° (29.07°)

STANDARD OBSTACLE CLEARANCE (ELECTRONIC AIR SUSPENSION)

Standard ride height (in)	8.3
Approach Angle (R-Dynamic)	25.93° (25.06°)
Ramp Angle	21°
Departure Angle (R-Dynamic)	27.3° (26.8°)

TURNING CIRCLE

Curb-to-Curb (ft)	11.6
-------------------	------

TURNING CIRCLE

Wall-to-wall (ft)	12
Turns lock-to-lock	2.52

WADING DEPTH

Electronic Air Suspension (maximum) (in)	25.6
Coil Suspension (maximum) (in)	23.6

POWER (HP)

ENGINE DATA

Bore (mm)	83
Stroke (mm)	92
Compression ratio (:1)	10.5:1

BRAKES

Front type	Single Piston Sliding Caliper, Ventilated Disc
Front diameter (mm)	325
Rear type	Single Piston Sliding Caliper, Ventilated Disc

BRAKES

Rear diameter (mm)	325
Park Brake	Motor on Caliper

WEIGHTS

Weight from (lbs)	4,217
Gross Vehicle weight (lbs)	5,445
Maximum mass on front axle (lbs)	2,623
Maximum mass on rear axle (lbs)	3,131

TOWING

Unbraked trailer (lbs)	1653.5
Maximum towing (lbs)	5,291
Maximum coupling point/nose weight (lbs)	386
Maximum vehicle and trailer combination/ Gross Train Weight (lbs)	10,736

ROOF CARRYING

Maximum roof load (including Roof Rails) (lbs)	174
---	-----

PERFORMANCE

Maximum speed (mph)	135
Acceleration 0-60 mph (secs)	6.4
Fuel tank capacity - usable (US gallons)	16.6
City (mpg)	21
Highway (mpg)	27
Combined (mpg)	23

Pricing

BASE	\$67,600
CONFIGURED OPTIONS TOTAL	\$4,055
Delivery and Destination Charge	\$995
Final price	\$72,650*

YOUR CONFIGURATION

https://buildyour.landrover.com/lr2/r/summary/_/en_us/l560_k18/4bdzx/a-250si4_a-rdynamic_rd3/n-025la_n-028bx_n-029mi_n-031pc_n-032cg_n-032ja-088hh_n-033jk-ni_n-038id_n-060bc_n-064fc_n-074qc_n-080ac_n-1aq_n-300bd



*Starting at price shown is Manufacturer's Suggested Retail Price. Excludes destination/handling charge (\$1,175 for Range Rover Evoque and Discovery Sport, \$1,275 for Range Rover Velar, \$1,475 for Range Rover, New Range Rover Sport, Discovery and Defender), tax, title, license, and retailer fees, all due at signing, and optional equipment. Base Manufacturer's Suggested Retail Price excludes destination/handling charge and may include optional equipment but excludes tax, title, license, and retailer fees, all due at signing. Total Manufacturer's Suggested Retail Price includes destination/handling charge and may include optional equipment but excludes tax, title, license, and retailer fees, all due at signing. Retailer price, terms and vehicle availability may vary. See your local authorized Land Rover Retailer for details.

†Always follow local speed limits.

‡All figures are EPA estimates. Actual mileage may vary.

§Never tow beyond a vehicle's permissible towing capacity. Before towing, please consult the owner's manual or your local authorized Land Rover Retailer for more details.

- [PRIVACY POLICY](#)
- [TERMS AND CONDITIONS](#)
- [CONTACT US](#)
- [DISCLAIMERS](#)
- [CAREERS](#)
- [ACCESSIBILITY STATEMENT](#)

© 2023 Jaguar Land Rover North America, LLC, 100 Jaguar Land Rover Way, Mahwah, NJ 07495-1100

Important note on imagery & specifications. We are living through exceptional times. Due to the COVID-19 pandemic, we have been prevented or delayed in the creation of new images of current model year vehicles. Furthermore, the global impact of micro-chip shortages is further affecting launch timings and build specifications, including options and accessories. Until these unique events are resolved, please note that **many vehicle images cannot be updated to 2022/2023/2024 model year specifications**. As a result, available features, options, trim and color schemes may differ from many images shown and therefore you should not rely solely on such images in making purchasing decisions. Please contact your local authorized Land Rover Retailer for detailed 2022/2023/2024 model year specifications.

Jaguar Land Rover Limited is constantly seeking ways to improve the specification, design and production of its vehicles, parts, options and/or accessories and alterations take place continually, and we reserve the right to make changes without notice. Some features may vary between optional and standard for different model year vehicles. The information, specification, engines and colors on this website are based on European specifications and may vary from market to market and are subject to change without notice. Some vehicles are shown with optional equipment and retailer-fit accessories that may not be available in all markets. Please contact your local authorized Land Rover Retailer for availability and prices.

RANGE ROVER

<https://www.landroverusa.com/index.html>